



DATASHEET

# VIAjet™ L-Series

HIGH-RESOLUTION THERMAL INKJET PRINTERS

Drive productivity on your production line with precise marking at extraordinary speeds on porous and non-porous packaging as well as wood products and other porous surfaces.

**Ideal Applications**

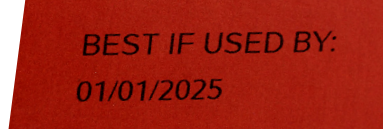
- + Single and multi-line text, 1D and 2D barcodes, logos and graphics
- + Fixed and variable data, including date/lot codes, serial numbers, GS1
- + Retail branding and traceability

**Advantages**

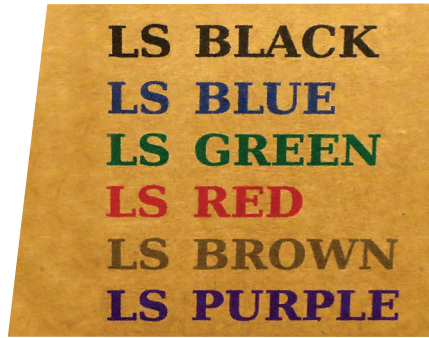
- + Cost effective alternative to continuous inkjet printing
- + True 600 dpi marking at 200 ft/min (60 m/min)
- + Twice as fast as competitive systems
- + Excellent uptime with cartridge-based system and virtually no maintenance
- + Available active bulk ink supply keeps your line running non-stop, for less

**Increase Production Line Efficiency**

- + Centralize marking and coding control with the industry's only true universal controller, MPERIA®
- + Automate data flow with seamless database integration
- + Add marking technology and systems without extra investment or middleware



L12 mark on chipboard



L12 marks on kraft brown corrugate



L50 mark on plywood



L50 mark on white corrugate



## VIAjet L-Series Specs

### Operating Temperature and Humidity

- + Ink dependent<sup>(1)</sup>

### Inking System

- + Single-use cartridges and bulk ink
- + Water-based and fast drying solvent-based inks, including MEK
- + Multiple color options

### Electrical

- + 96-264 VAC, 50-60Hz, 0.5-1A via adapter or 24VDC 90W filtered power

### Hardware Options

- + Photocell, encoder, mounting hardware, hand scanner, warning light, L-Series Active Bulk Ink System (ABIS)

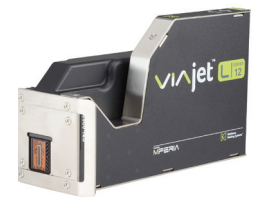
### Print Capabilities

- + TrueType fonts with unique ink-saving print density and object color settings
- + Cost per mark and ink usage calculator
- + Static, dynamic, and user-editable variable fields
- + Customizable date and time codes, sequential and batch counters
- + 1D Barcodes (GS1-128, GS1 DataBar, EAN-8/13, UPC-A, ITF/ITF-14, Code 39/128)
- + 2D codes (GS1-Data matrix, Data matrix, QR and Micro QR code, PDF417)

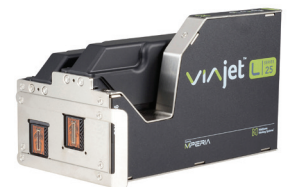
	Number of ink cartridges	Maximum print height	Maximum print speed @75 dpi <sup>(2)</sup>	Maximum print speed @600 dpi	Maximum print distance for readable 2D barcode	Printing direction	Printhead dimensions
L12	1	1/2" (12 mm)	1,600 ft/min (488 m/min)	196 ft/min (60 m/min)	1/4" (6 mm)	Horizontal or down	3.4" x 5.1" x 8.3" (87 x 129 x 210 mm) (W x H x L)
L25	2	1" (25 mm)	1,600 ft/min (488 m/min)	196 ft/min (60 m/min)	1/4" (6 mm)	Horizontal or down	5.2" x 5.1" x 8.3" (133 x 129 x 210 mm) (W x H x L)
L50	4	2" (50 mm)	1,600 ft/min (488 m/min)	196 ft/min (60 m/min)	1/4" (6 mm)	Horizontal or down	8.8" x 5.2" x 8.3" (224 x 133 x 210 mm) (W x H x L)

(1) Typically 50-104 °F/10-40 °C, 10 - 80% RH (non-condensing) for water-based inks.

(2) Multiple printheads can be linked to increase print speed by 2x-4x.



L12



L25



L50

## MPERIA Platform

### MPERIA® Controller

- + Control multiple marking technologies and production lines
- + Ethernet-based with advanced connectivity possibilities for ERP systems, computers, PLCs
- + Password-protected user levels
- + Remote user interface control via VNC
- + Multilingual with full BIDI support
- + Intuitive touchscreen user interface
- + Built-in database and on-board image editor
- + Simple message creation and editing
- + Installation, configuration, troubleshooting, and maintenance guidance
- + Windows/Codesoft driver
- + Ample storage for messages, logos, barcodes, time codes, etc.